



## **PCG EDUCATION & PRACTICE MANAGEMENT**

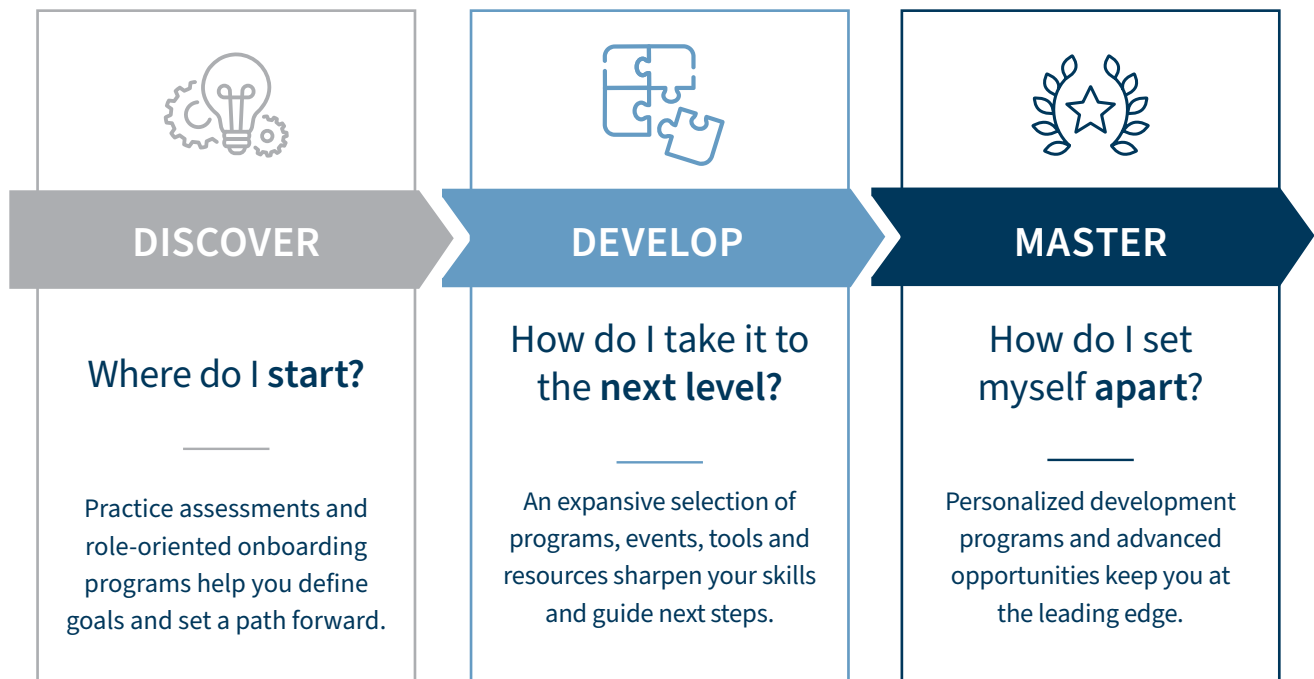
Your source for the tools, resources and educational opportunities you need to excel

---

**RAYMOND JAMES®**

# The pathway of practice and professional development

Raymond James Private Client Group Education & Practice Management has programs tailored for every role, resources curated for every level of experience.



## EMPOWERED EXECUTION

An industry leader in developing advisor and team resources, PCG Education & Practice Management is centered on your success. From our proven model to best-in-class tools and powerful resources, we meet you where you are, to help you take the necessary action to get to the next level – whatever that looks like for you.

By investing in yourself and your business, you can continue to learn, often leading to breakthrough opportunities within your practice. You'll find flexibility and support to help you manage your practice effectively and accelerate business growth.

*“Execution starts with focus.”*

– Jim Huling, author of “The 4 Disciplines of Execution”

## AN AWARD-WINNING APPROACH

The foundation of how we help you grow is our firm's proprietary Practice Intelligence Model – a simple, step-by-step framework to optimizing your practice.

From attracting new clients to deepening time-honored relationships, and helping you assess and refine your business at every step, the model gives you the freedom to focus on the parts of your practice that need the most attention.

Find insights on best practices and connections to dozens of practice improvement tools on our online portal organized by focus area.



# RAYMOND JAMES®

INTERNATIONAL HEADQUARTERS: THE RAYMOND JAMES FINANCIAL CENTER

880 CARILLON PARKWAY // ST. PETERSBURG, FL 33716 // 866.905.6333

NOT FOR CLIENT USE

Winner of the 2015 and 2016 Broker/Dealers Technology Award by WealthManagement.com for the Practice Intelligence Model  
© 2023 Raymond James & Associates, Inc., member New York Stock Exchange/SIPC © 2020 Raymond James Financial Services, Inc., member FINRA/SIPC  
22-PMEd17G-0188 KN 04/23